

# REED SWITCH CONTACT FORM A NORMALLY OPEN CONTACTS

## MKA-10704

Reed relays, Security, Limit switching, Telecoms, Office equipment (up to 2GHz)

Switching current	0,25 A	Switching power	7,5 W, VA
Switching voltage	30 V	Pull in range	10...35 AT



### Electrical Data

Release range, AT, min	5
Carry current, A	0,5
Breakdown voltage	
V, not less, AC/DC	127/180
Resetting Ratio	0,4...0,9
Contact resistance, Ω, not more	0,12
Operating time including bounce, ms, not more	0,5
Release time including bounce ms, not more	0,3
Capacitance, pF, not more	0,2
Insulation resistance, GΩ, not less	1
Operating frequency, Hz	100
Switching current frequency, kHz, not more	2 000 000

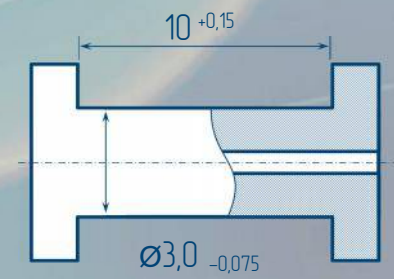
### Environmental Data

Contact material	Au
Life expectancy, switching cycles x10 <sup>6</sup> max load power... low load power	0,5...2
Vibration (1...2000 Hz), g, not more	20
Resonant frequency, Hz	3000
Shock (1±0,3) ms, g, not more	750
Weight, g, not more	0,1
Operating temperature, °C	-60...100
Humidity, %, not more	98

### Certificates



### Test Coil



5000 turns, wire Ø0,063 mm  
coil resistance 580

### Order information

Delivery of reed switches with formed and/or cropped leads and with narrow pull in ranges is available by agreements.



RYAZAN METAL CERAMICS INSTRUMENTATION PLANT, JSC  
51V, Novaya St., 390027, Ryazan, Russia  
Phone: +7 (4912) 240-234, Факс: +7 (4912) 240-234 E-mail: oves@rmcip.ru

Update on 26 March 2014

